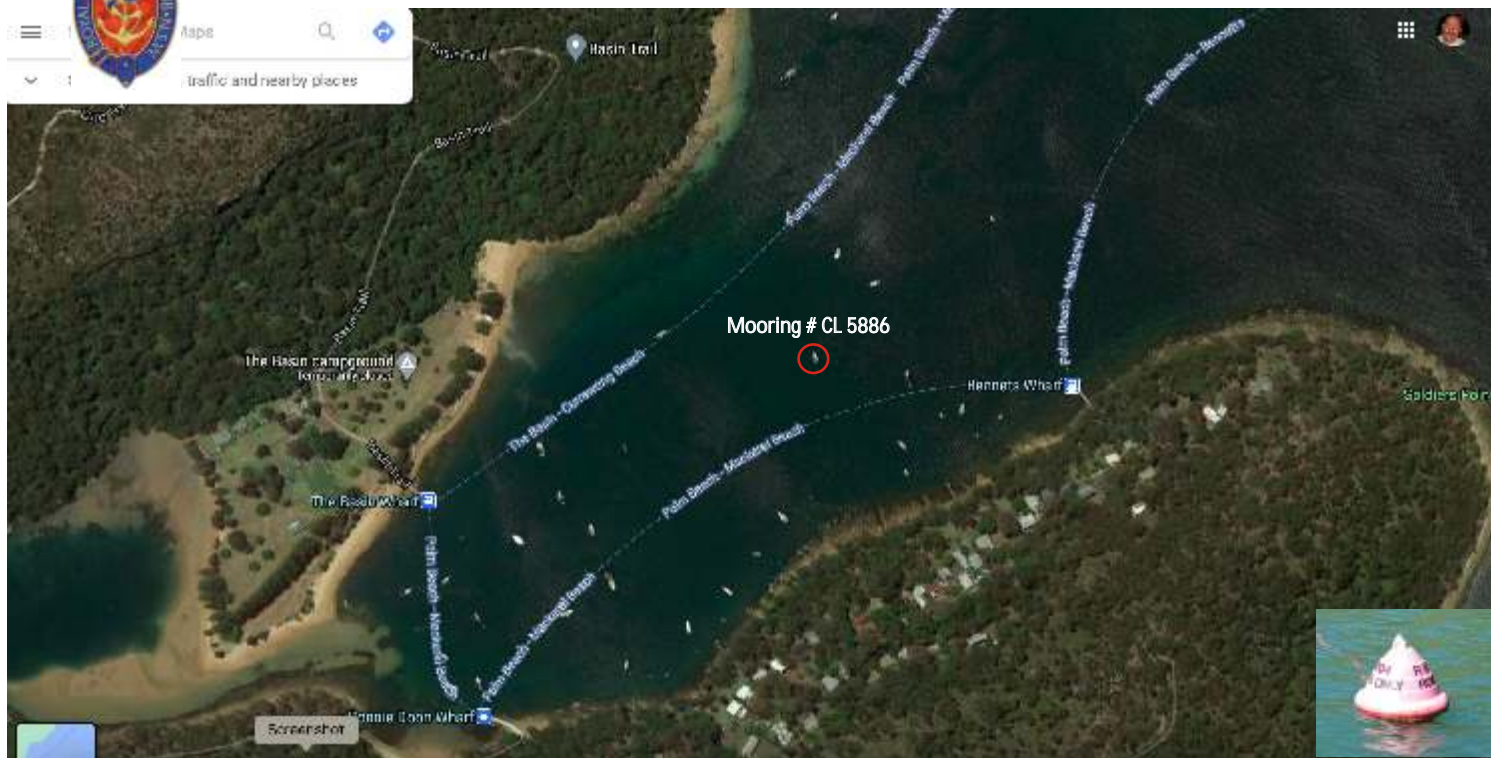




# The Basin S 33 36.18 E 151 17.89



This mooring is for the exclusive use of members of the Royal Motor Yacht Club Point Piper. It is a **RED bouy** with the identification number CL 5886. Please contact the marina manager to reserve this mooring.

# America Bay S 33 35.79 E 151 15.02

Refuge Bay (CL5190-03) S 33 35.99 E 151 14 .98

Refuge Bay (CL5190-02) S33 36.00 E 151 14.82



Each of these mooring are for the exclusive use of members of the Royal Motor Yacht Club Point Piper. In America Bay there is a **RED bouy** with the identification number CL 5190-01. In Refuge Bay there are two **RED Bouys** with the identifications CL 5190-02 & CL 5190-03. Please contact the marina manager to reserve this mooring.